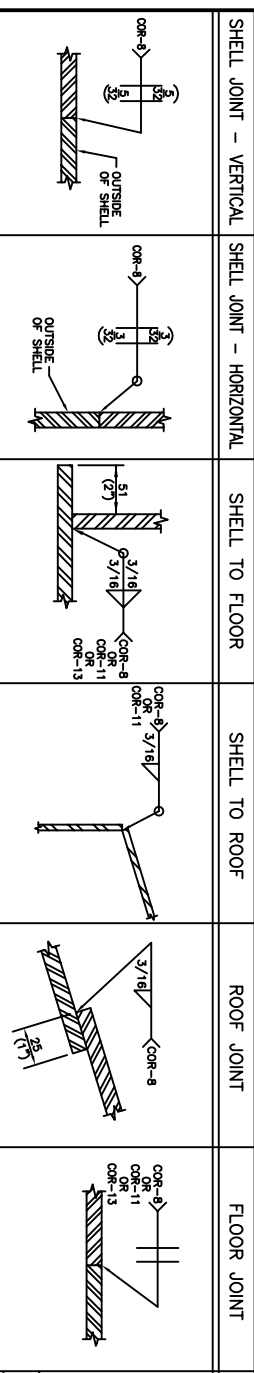


STANDARD WELD DETAILS (N.T.S.)

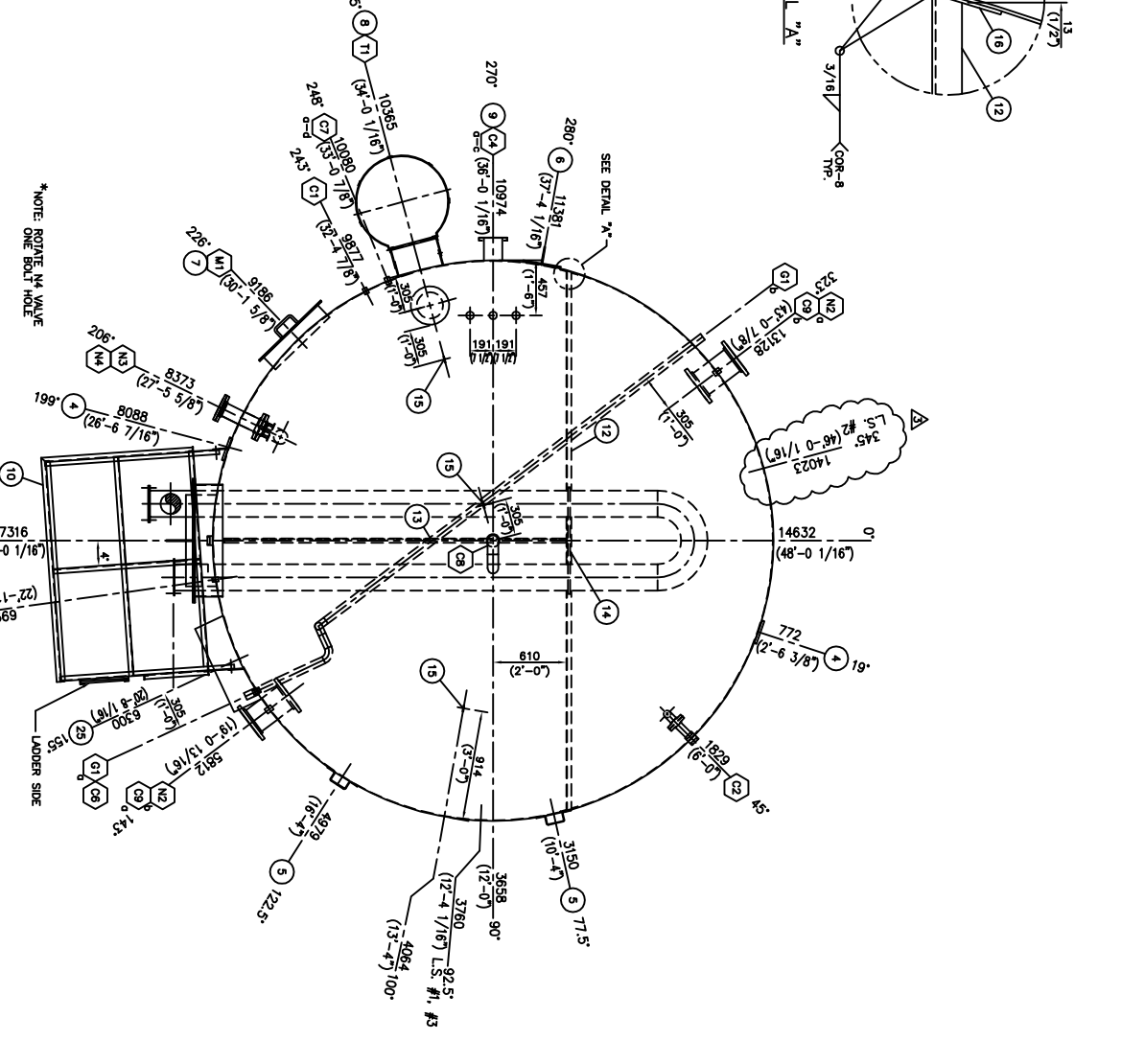
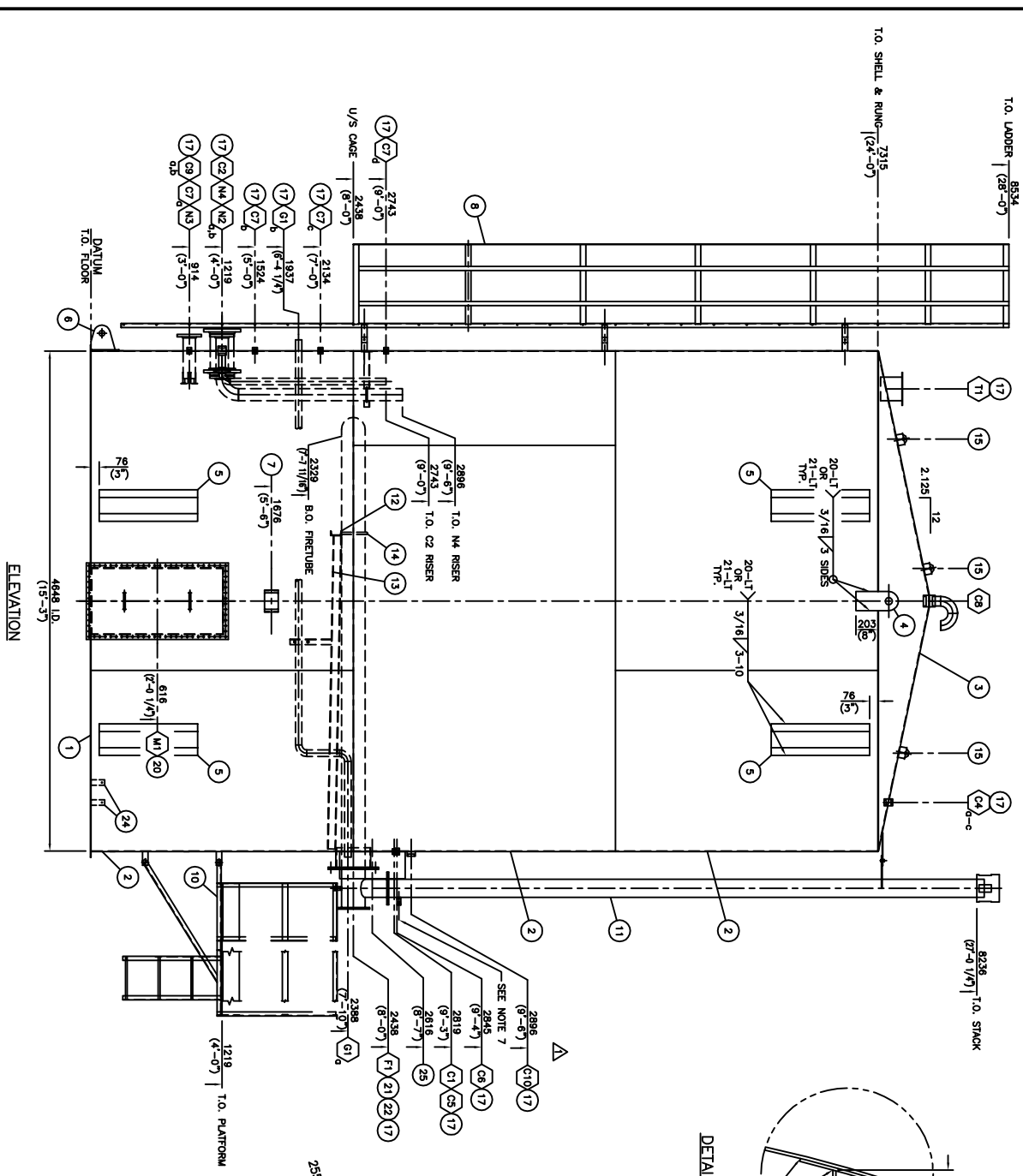


NOZZLE SCHEDULE

MK	NO	SIZE	SCH	RATE	TYPE	PROTECTION		REPAID	DESCRIPTION
						INT.	EXT.		
N2	2	2 1/8"	STD	ANSI	REPO	203	6	201	SPALLER C/W INTERNAL FLANGE
N3	1	1 1/4"	4"	STD	REPO	203	6	201	WATER OUT C/W PLAS. PROTECTOR & VORTEX BREWER
N4	1	1 1/4"	4"	STD	REPO	152	6	152	INLET LINE C/W RISER & PLAS. PROTECTOR
N5	2	1 1/4"	4"	ANSI	REPO	25	1	152	STAINERS (FIELD FIT)
N6	1	80"	2"	ANSI	REPO	102	4"	102	C/W PLAS. PROTECTOR
G10	1	60"	2"	STD	PRE	AS SHOWN	102	4"	C/W PLAS. PROTECTOR
G11	1	19 3/4"	2"	STD	PRE	AS SHOWN	102	4"	TEMP. INDICATOR C/W 3/4" x 1/2" x 6" LG. THERMOWELL (S.S.)
G12	1	19 3/4"	2"	STD	PRE	AS SHOWN	102	4"	TEMP. INDICATOR C/W 3/4" x 1/2" x 6" LG. THERMOWELL (S.S.)
G13	1	19 3/4"	2"	STD	PRE	AS SHOWN	102	4"	TEMP. INDICATOR C/W 3/4" x 1/2" x 6" LG. THERMOWELL (S.S.)
G14	1	19 3/4"	2"	STD	PRE	AS SHOWN	102	4"	TEMP. INDICATOR C/W 3/4" x 1/2" x 6" LG. THERMOWELL (S.S.)
G15	1	19 3/4"	2"	STD	PRE	AS SHOWN	102	4"	TEMP. INDICATOR C/W 3/4" x 1/2" x 6" LG. THERMOWELL (S.S.)
G16	1	19 3/4"	2"	STD	PRE	AS SHOWN	102	4"	TEMP. INDICATOR C/W 3/4" x 1/2" x 6" LG. THERMOWELL (S.S.)
G17	1	19 3/4"	2"	STD	PRE	AS SHOWN	102	4"	TEMP. INDICATOR C/W 3/4" x 1/2" x 6" LG. THERMOWELL (S.S.)
G18	1	19 3/4"	2"	STD	PRE	AS SHOWN	102	4"	TEMP. INDICATOR C/W 3/4" x 1/2" x 6" LG. THERMOWELL (S.S.)
G19	1	19 3/4"	2"	STD	PRE	AS SHOWN	102	4"	TEMP. INDICATOR C/W 3/4" x 1/2" x 6" LG. THERMOWELL (S.S.)
G20	1	19 3/4"	2"	STD	PRE	AS SHOWN	102	4"	TEMP. INDICATOR C/W 3/4" x 1/2" x 6" LG. THERMOWELL (S.S.)
G21	1	19 3/4"	2"	STD	PRE	AS SHOWN	102	4"	TEMP. INDICATOR C/W 3/4" x 1/2" x 6" LG. THERMOWELL (S.S.)
G22	1	19 3/4"	2"	STD	PRE	AS SHOWN	102	4"	TEMP. INDICATOR C/W 3/4" x 1/2" x 6" LG. THERMOWELL (S.S.)
G23	1	19 3/4"	2"	STD	PRE	AS SHOWN	102	4"	TEMP. INDICATOR C/W 3/4" x 1/2" x 6" LG. THERMOWELL (S.S.)
G24	1	19 3/4"	2"	STD	PRE	AS SHOWN	102	4"	TEMP. INDICATOR C/W 3/4" x 1/2" x 6" LG. THERMOWELL (S.S.)
G25	1	19 3/4"	2"	STD	PRE	AS SHOWN	102	4"	TEMP. INDICATOR C/W 3/4" x 1/2" x 6" LG. THERMOWELL (S.S.)
G26	1	19 3/4"	2"	STD	PRE	AS SHOWN	102	4"	TEMP. INDICATOR C/W 3/4" x 1/2" x 6" LG. THERMOWELL (S.S.)
G27	1	19 3/4"	2"	STD	PRE	AS SHOWN	102	4"	TEMP. INDICATOR C/W 3/4" x 1/2" x 6" LG. THERMOWELL (S.S.)
G28	1	19 3/4"	2"	STD	PRE	AS SHOWN	102	4"	TEMP. INDICATOR C/W 3/4" x 1/2" x 6" LG. THERMOWELL (S.S.)
G29	1	19 3/4"	2"	STD	PRE	AS SHOWN	102	4"	TEMP. INDICATOR C/W 3/4" x 1/2" x 6" LG. THERMOWELL (S.S.)
G30	1	19 3/4"	2"	STD	PRE	AS SHOWN	102	4"	TEMP. INDICATOR C/W 3/4" x 1/2" x 6" LG. THERMOWELL (S.S.)

MATERIAL LIST

MK	QTY	DESCRIPTION	MATERIAL	WT
1	2	FLOOR HALF PLATE 1/4" THK. x 15'-7 1/2" DIA. (4-36)	PR1-2425	1988
2	2	PLATE 3/16" THK. x 8'-0" x 47'-11 1/2" LG.	A-36	8748
3	2	ROOF HALF PLATE 3/16" THK. x 15'-9 1/2" DIA. (4-36)	PR1-2426	1923
4	2	LIFTING LUG 1/2" THK.	PR1-4273	24
5	4	TANK HULLING PAD	PR1-1494	136
6	1	TALKING LUG C/W BRACKET	PR1-4276	27
7	1	NAMEPLATE C/W BRACKET	PR1-2886	5
8	1	LOADER C/W CASE	PR1-2888	337
9	1	CORNER STANDARD CB FOR 750 BBL TANK 0-50 GAL. ORANGE 50-120 WHITE C/W BLACK WARNINGS	PR1-2892	103
10	1	ORANGE 50-120 WHITE C/W BLACK WARNINGS	PR1-2892	103
11	1	FRETURER STACK 6"	REF. DMS	-
12	1	CHANNEL C4 x 4.1# x 14'-4" LG. (CUT TO SUIT/F.T. SUPPORT)	1-015725-5104	36
13	1	CHANNEL C4 x 4.1# x 9'-6" LG. (FRETURER GUIDE)	040-21-44W	18
14	1	FRETURER HOLD-DOWN FOR 6" U-TUBE	PR1-2902	4
15	3	TANK ROOF SAFETY HARNESS LUG	PR1-2533	9
16	2	REPAID 3/16" THK. x 6" DIA.	A-36	4
17	1	NOZZLE DETAILS	1-015725-5102	649
18				
19				
20	1	CLEANOUT SHELL MANWAY 2'-0" x 4'-0" C/W 1/4" CORNER	PR1-1221	191
21	1	650000 BBL/HR. (BURNER SUPPLIED BY OTHER)	PR1-673	1398
22	1	REPAID FOR 6" FRETURER THROAT	PR1-1405	-
23	2	INTERNAL GAUGE BOARD CLIPS	PR1-4283	4
24	2	HOT BOX 30" (L) x 24" (W) x 10" (D) (BENLWORTH)	BSB JACKS	12
25	1		VSJMA42761	
26				
27				
28				
29				
30				
*QTY'S ARE FOR ONE TANK - 10 REQ'D				1500
NOTES:				17986
1. ALL DIMENSIONS ARE IN S.I. & IMPERIAL UNITS. DIMENSIONS IN ONLY.				18032
2. BRACKET ARE IMPERIAL HARD CONVERSIONS FOR SHOP REFERENCE ONLY.				
3. SHIP LOOSE TENDS. ITED #8				
4. ALL ACCESSORIES ARE TO HAVE THE SERIAL NUMBER METHOD				
5. LOWER RIGHT HULLING PAD AND STAINERS, LOADERS AND PLATFORMS.				
6. MARKED CB FROM 0-50 gal. cu. m. w/ ORANGE. 50-120 WHITE				
7. PLUG BOTH CHKS. ON F/T.				



NO	DATE (d/m/y)	REVISIONS	BY	APPD
1	05/04/10	AS-BUILT, RELOCATED L.S. #2	JK	JK
2	01/05/08	AS-BUILT, NO CHANGE	JK	JK
3	01/05/08	ADDED C10	JY	JK
4	01/05/08	ISSUED FOR CONSTRUCTION	JY	JK

CONVAL INDUSTRIES

BONAVISTA

750 BBL SALES TANK - 2008 VERSION
GENERAL ARRANGEMENT

SIZE: 4446mm I.D. x 2315mm HIGH
SCALE: 1:30
DWG. NO.: J. YUAW
DATE (d/m/y): 01/05/08

SHEET NO.: 1 of 1
REV. NO.: 3